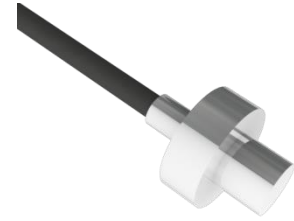


# PPB-Series

Miniature Pressure Sensor

Ref : 301

Rev : G



## DESCRIPTION

These miniature pressure sensors are designed to make static measurements of pressure as well as dynamic in corrosive condition. Realized entirely with stainless steel, these levelling membrane sensors are compatible with a great number of corrosive or conducting fluids.

## MEASURING RANGES

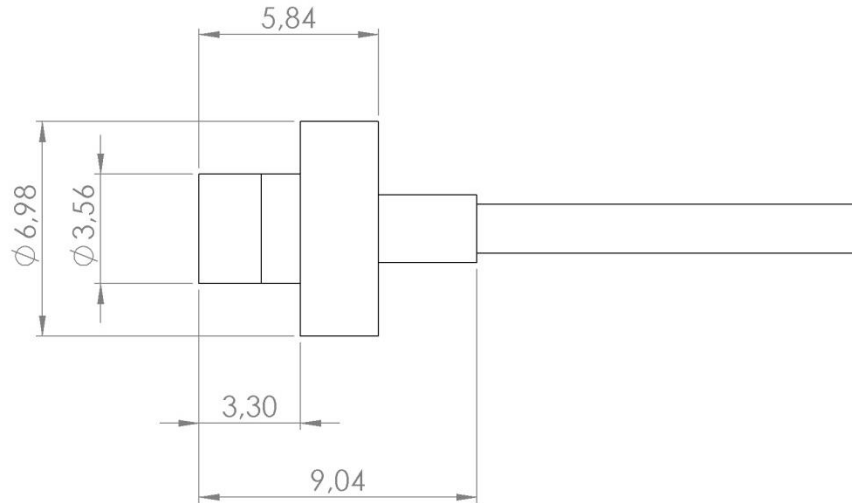
PRESSURE RANGES (FS in PSI)	PRESSURE RANGES (FS in BAR)	Pressure limit	RESONANT FREQUENCY	OUTPUT FS / 5V (multiplied by 2 / 10V)	Non Linearity & Hysteresis (%FS)	THERMAL ZERO SHIFT / 50°C (TZS)
<b>5</b>	<b>0.3</b>	10 x FS	55 KHz	11 mV ± 4 mV	± 1%	± 2 mV
<b>10</b>	<b>0.7</b>	5 x FS	55 KHz	22 mV ± 8 mV	± 1%	± 2 mV
<b>15</b>	<b>1</b>	3.5 x FS	55 KHz	33 mV ± 8 mV	± 1%	± 2 mV
<b>25</b>	<b>1.7</b>	2 x FS	55 KHz	55 mV ± 8 mV	± 1%	± 2 mV
<b>50</b>	<b>3.5</b>	2 x FS	60 KHz	60 mV ± 8 mV	± 1%	± 2 mV
<b>100</b>	<b>7</b>	2 x FS	70 KHz	68.75 mV ± 8 mV	±0.75%	± 1.5% FSO
<b>250</b>	<b>17</b>	2 x FS	100 KHz	68.75 mV ± 8 mV	±0.5%	± 1.5% FSO
<b>500</b>	<b>35</b>	2 x FS	150 KHz	68.75 mV ± 8 mV	±0.5%	± 1.5% FSO
<b>1 000</b>	<b>70</b>	2 x FS	200 KHz	68.75 mV ± 8 mV	±0.5%	± 1.5% FSO
<b>2 000</b>	<b>140</b>	2 x FS	250 KHz	68.75 mV ± 8 mV	±0.5%	± 1.5% FSO
<b>2 500</b>	<b>170</b>	2 x FS	300 KHz	68.75 mV ± 8 mV	±0.5%	± 1.5% FSO
<b>5 000</b>	<b>350</b>	2 x FS	450 KHz	68.75 mV ± 8 mV	±0.5%	± 1.5% FSO

## TECHNICAL DATA

PARAMETERS	VALUES	NOTES
Supply voltage	5 Vdc	10 Vdc in option
Pressure type	Absolute, Relative	
Repeatability	± 0.25% of FS	
Operating temperature	-40°C to +120°C	
Compensated temperature	20° to +80°C	Others in option
Thermal Sensitivity Shift	< ± 2% / 60°C	
Zero offset at 20°C	± 10 mV	
Insulation	> 100 MΩ / 50V	
Impedance in	1200 Ω nom	
Impedance out	350 Ω nom	
Material	Stainless Steel	
Output	Cable 24" standard	Other length in option
Options	Consult technician	
Sealing	VITON O'ring 3.68x1.78 80 shore A	

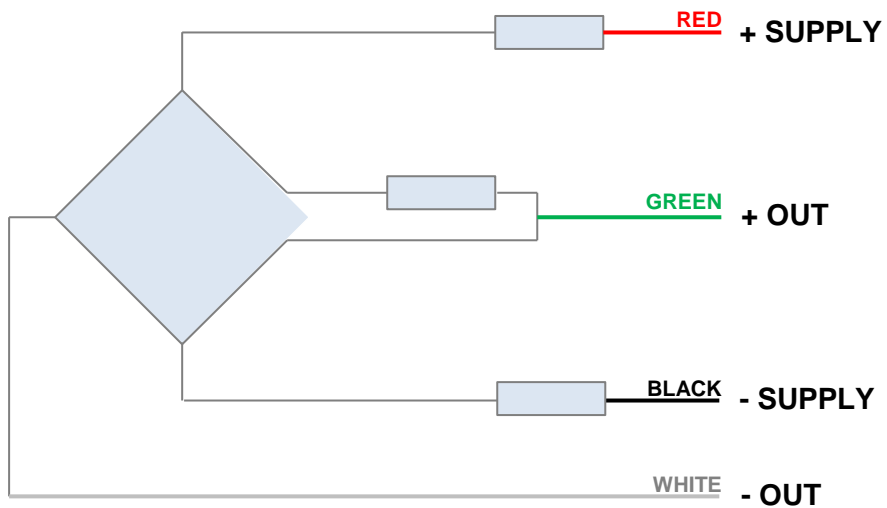
SIZE

PAPB

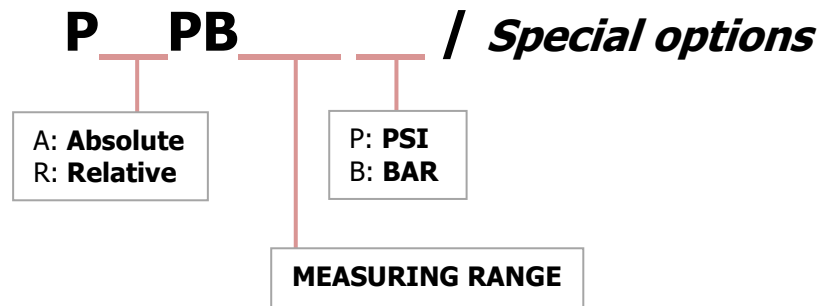


WIRING

PAPB



## ORDERING INFORMATION



- **Special options**

OPTION		FEATURES
Cable Length (24" standard)	<b>LXXM</b> <b>LXXF</b>	XX = Length in meter (M) XX = Length in feet (F)
Supply voltage	<b>None</b> <b>10V</b>	5 Vdc (standard) 10 Vdc
Compensated temperature	<b>None</b> <b>C1</b>	20°C to 80°C (standard) -40°C to 20°C

Example:

**PAPB1KP**

- Absolute
- 1000 PSI
- 24" cable output
- Supply voltage: 5V
- Output: 68.75 mV ± 8 mV
- Compensated temperature: 20°C to 80°C

**PAPB50P/L05M10VC1**

- Absolute
- 50 PSI
- 5 meters cable output
- Supply voltage: 10V
- Output: 120 mV ± 16 mV
- Compensated temperature: -40°C to 20°C

## CONTACT

**G.R.D.I.A MESUREX**

13 Rue des Corroyés  
78730 Saint Arnoult en Yvelines

Tel : +33 (0) 1 30 41 23 62

Fax : +33 (0) 1 30 41 23 80

Mail : [mesurex@mesurex.fr](mailto:mesurex@mesurex.fr)