

CONVERTISSEUR USB POUR CAPTEURS

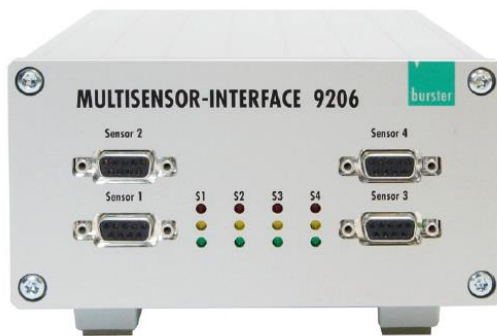
Pont de jauge, résistance ou DC

Ref : TR FO USB 9206

Rev : A



1 channel In-Line IP67



USB multi sensor interface in housing

- Inexpensive "Plug & Measure" design
- Simple connection via PC USB port
- 24 bit resolution
- High-speed measurement of up to 1200 readings/sec.
- Convenient configuration and analysis software DigiVision
- Pt100 as option
- LabVIEW and DLL drivers free of charge
- Integration in customer-owned software
- 6 wire technology for the highest precision

Application

In the field there is a frequent need to measure sensor readings rapidly and easily right at the sensor and to transfer them directly to a PC without additional amplifiers or converters. The 9206 USB sensor interface can satisfy this requirement admirably, thanks to its „plug & measure“ design. The USB connection means installation could not be simpler.

Typical applications:

- ▶ Mobile test measurements via laptop
- ▶ Laboratory test set-ups
- ▶ Instrumentation and control
- ▶ Diagnostic measurements in the chemical industry
- ▶ PC-based recording of expansion figures in bio engineering

Description

The USB sensor interface takes its supply from the connected PC via the USB port, and uses it to generate the power supply for the sensors. The initial settings and sensor settings are made by burster in-house and saved in the USB sensor interface. These can then be fine-tuned by the customer.

Software provides display and archiving functions. But a license key enables an open-end expansion. 32 interfaces output curves may be displayed at the same time. One USB sensor interface can be connected as standard. Each sensor can be tared individually, and measurement curves can be displayed jointly or separately in a graph. We can configure the interface to suit a specific sensor, although customer-specific parameters can be changed using the free analysis software supplied.

The connection to LabVIEW or the integration into customers' software is enabled by a free driver package.

Accessories

Configuration and evaluation software DigiVision for 1 channel measurement and 200 measurements/sec. (included in scope of delivery)

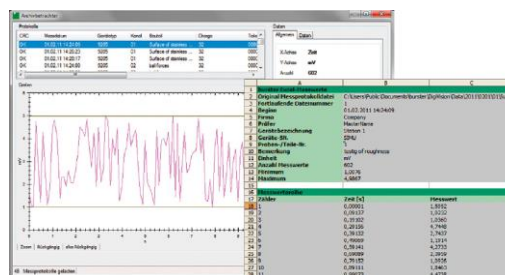
Model 9206-P001

Configuration and evaluation software DigiVision for multi-channel measurement. The software can display up to 16 USB Sensor Interfaces parallelly. Up to 1200 meas./sec. are possible, no mathematic functions or calculation

Model 9206-P100

Configuration and evaluation software DigiVision for multi-channel (displays up to 32 measurement curves at the same time) and measurement, up to 1200 meas./sec. possible. Measurement results can be offset against each other via freely programmable mathematic measuring channels.

Model 9206-P200



Technical Data

Connectable sensors

Strain gauge

Bridge resistance:	350 Ω ... 5 kΩ
Connection system:	6 wire
Sensitivity:	0 ... 50 mV/V
Sensor excitation:	2.5 V / 5 V
Excitation current:	max. 45 mA
Measurement:	± 0.05 % F.S.

Potentiometer

Connection system:	3 wire
Resistance:	1 kΩ ... 5 kΩ
Measurement signal:	5 V
Sensor excitation:	5 V
Excitation current:	max. 45 mA
Measurement error:	± 0.05 % F.S.

Transmitter and DC/DC sensors

Sensor excitation:	12 V
Excitation current:	80 mA
Measurement signal:	± 10 V
Measurement error:	± 0.05 % F.S.

Temperature Pt100

Sensors:	Pt100
Range:	- 200 ... + 600 °C
Accuracy:	0.1 K
Measuring rate:	max. 2 meas./s

General amplifier data

Resolution:	24 bit
Measuring rate except Pt100:	up to 1200 readings per second
	only with software 9206-P100 or 9206-P200
	up to 200 readings per second
	and 1 measuring channel with 9206-P001
Input resistance:	> 1 GΩ
Temperature coefficient:	20 ppm/K
Environmental temperature range:	0 ... + 60 °C
Storage temperature:	- 40 ... + 70 °C
Zero drift:	< 0.1 μV/K

In-Line housing

Material:	Aluminium
Dimensions:	115 x 25 [mm]
Weight:	200 g
Protection class:	IP67
Mounting method:	screw clamp
Power supply:	via USB-plug 4 V ... 6 V
Cable length from sensor to 9206:	max. 3 m
Cable length from PC to 9205:	2.8 m
Sensor connection:	terminal block PG 7 connection
USB connection on 9206:	PG 7 connection

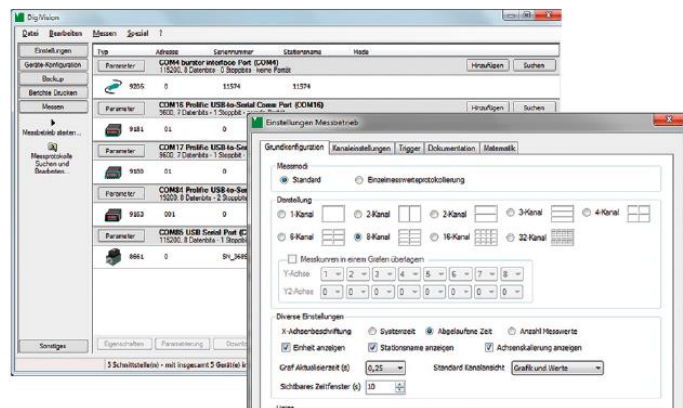
Desktop housing

Material:	Aluminium
Dimensions:	210 x 150 x 90 mm
Protection class:	IP20
Power supply:	90 ... 230 VAC / 11 ... 30 VDC
Cable length from PC to 9205:	1 m
Sensor connection:	9 pole Sub min D
Isolation:	yes / rated voltage 50 V
Display:	status LED
Energy input:	max. 30 VA

General Software Data

- ▶ Convenient device finder
- ▶ Instrument parameterization
- ▶ Instrument data adopted automatically, e.g. scaling, limit settings
- ▶ Back-up function for instrument data
- ▶ Simultaneous display of up to 16 measurement channels
- ▶ Different measurement rates can be combined
- ▶ Different triggers can be set: global or channel-specific
- ▶ Creation of instrument groups
- ▶ Report finder for locating group reports and individual reports
- ▶ Documenting individual measurement curves with various options e.g. serial number, batch counter, day counter

- ▶ Export function to Excel
- ▶ Communication with a controller unit (PLC etc.) via RS232 or Ethernet



CONTACT

G.R.D.I.A MESUREX

13 Rue des Corroyé
 78730 Saint Arnoult en Yvelines
 Tel : +33 (0) 1 30 41 23 62
 Fax : +33 (0) 1 30 41 23 80
 Mail : mesurex@mesurex.fr