

AVI Series

PT100 - PT1000 / Thermocouple for immersion

Ref : 2191

Rev : B



DESCRIPTION

This model of temperature sensor is available in platinum probe version PT100 or PT1000 and in thermocouple version. It is ideal for immersion temperature measurements.

This sensor has a threaded body, facilitating its attachment, extended by a shielded Teflon extension cable.

MESUREX is a sensor manufacturer. We can adapt most sensors to your needs. Please [contact us](#).

K Green

J Black

T Brown

N Pink

E Purple

R/S Orange

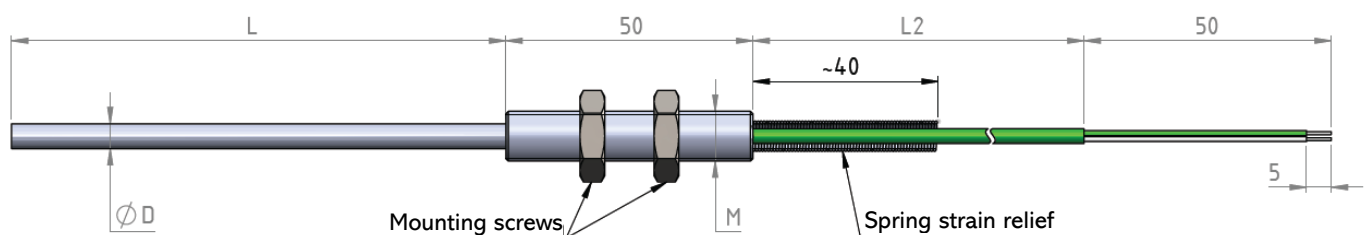
B Grey

Cu White

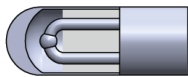
TECHNICAL CHARACTERISTICS

PARAMETERS	VALUES
Type	PT100 (single or double) / PT1000 (single or double) / Thermocouple type K, J, T, E, N, S (single or double)
Temperature range	-60°C to 250°C (see special options)
Construction of the sheath	Stainless steel 304 (other on request)
Construction of the extension	Shielded Teflon (other on request)
Precision	PT100 / PT1000: Class A according to NF EN 60751 standard (other on request) Thermocouple: Class 1 according to NF EN 60584-1 standard
Diameter	3 / 4 / 5 / 6 mm (other on request)
Sheath length	50 / 100 / 300 / 500 mm as standard (other on request – maximum 500 mm)
Extension length	2 m standard (other on request)
Threaded body	M10x100 / M6x100 / M8x125 / G1/4 / G1/2 (other on request)
Connection	Bare wires as standard (specific connector on request) PT100 / PT1000: 3-wire mounting as standard (2- or 4-wire on request)

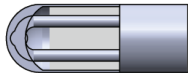
DIMENSIONS



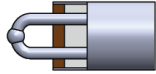
HOT SPOT (thermocouple)



Insulated (standard)



Grounded



Bare wires

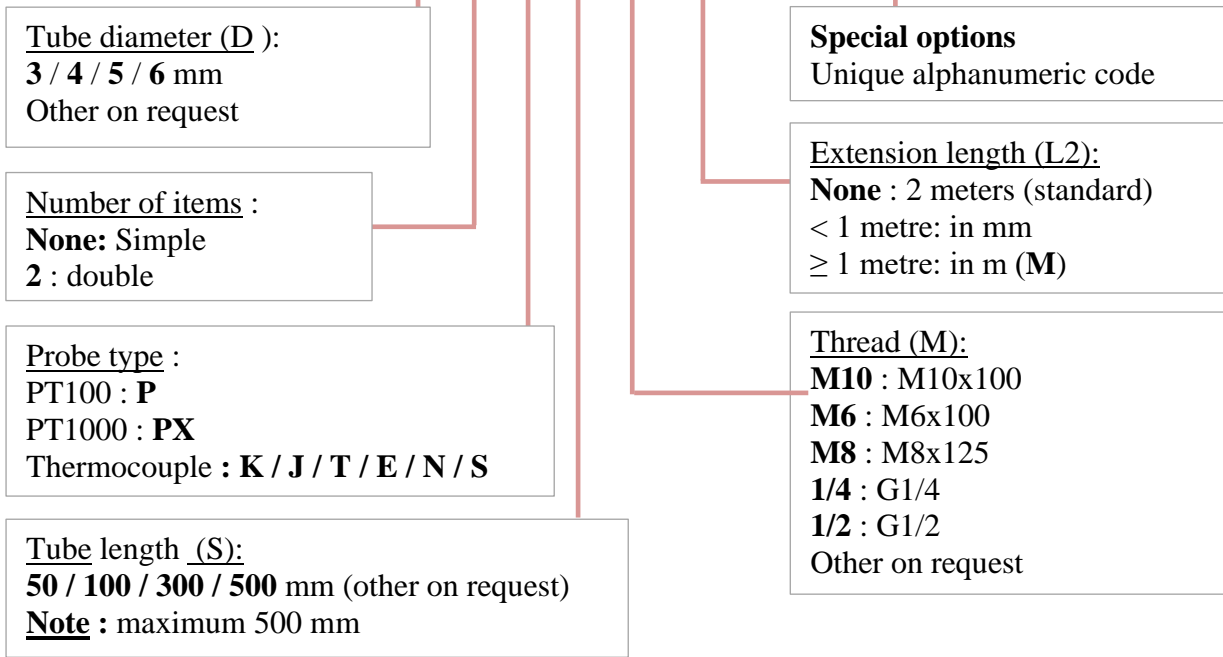
Note : In the case of an apparent hot spot, the thermocouple must be used in a dry, non-conductive environment.

WIRING (thermocouple)

EXTENSION THERMOCOUPLE COLOUR IEC584-3		
K	Green	+ Green
		- White
J	Black	+ Black
		- White
T	Brown	+ Brown
		- White
E	Purple	+ Purple
		- White
N	Pink	+ Pink
		- White
S	Orange	+ Orange
		- White

ORDER INFORMATION

AVI D N X L M L2 XXX



• Special options

OPTION	PARAMETERS	
Hot spot (thermocouple)	Insulated (standard) Grounded Bare wires	
Nature of the sheath	Stainless steel 304 (standard) Stainless steel 316L Other (contact us)	
Coating	None (standard) Teflon	Temperature: 250°C max
Nature of the extension	Shielded Teflon (standard) Unshielded Teflon PVC (armoured or unshielded) Silicone (shielded or unshielded) Glass silk (armoured or unshielded)	Temperature: 250°C max Temperature: 250°C max Temperature: 105°C max Temperature: 300°C max Temperature: 480°C max
Connector Type	None (standard) Miniature male Miniature female Standard male Standard female Ultra-miniature male Ultra-miniature female Other type of connector	200°C max (standard) High temperature (350°C max) Ceramic tiles (650°C max) (contact us)
PT100/PT1000 mount	3 wires (standard) 2 wires 4 wires	
PT100/PT1000 Accuracy	Class A (standard) Class B Class AA	According to NF EN 60751 standard
Threaded body length	50 mm (standard) Other length (contact us)	

Example : AVI3K50M10

- K type thermocouple
- Under stainless steel tube
- Diameter 3 mm
- Length 50 mm
- M10x100 threaded connection
- Length 50 mm
- Shielded Teflon extension
- Length 2 m
- Bare wire output
- Class 1 according to NF EN 60584-1 standard
- Color code according to NF EN 60584-3 standard

CONTACT

MESUREX

13 Rue des Corroyés

78730 Saint Arnoult en Yvelines (France)

Tel : +33 (0) 1 30 41 23 62

Fax : +33 (0) 1 30 41 23 80

Mail : mesurex@mesurex.fr