

## FC Series

Miniature compression sensor (external  $\varnothing$  25mm)

Ref : 3502

Rev : C



### DESCRIPTION

This type of miniature sensor is intended for compressive force measurements for both static and dynamic applications. It is available in stainless steel or aluminum version. The sensing element is equipped with micro-machined silicon gauges. This type of sensor is available in a load washer version with a central hole of diameter 8 mm or in hemispherical span (full), ideally designed to measure forces from 10 to 5000 N. Therefore, it is suitable for any application requiring a low-height sensor with a reduced mass.

In addition, MESUREX offers a wide range of conditioning and processing allowing power, signal amplification and sensor measurement display, to provide a complete calibrated measurement chain.

MESUREX is a sensor manufacturer. We can adapt most sensors to your needs. Please [contact us](#).

### MEASURING RANGE

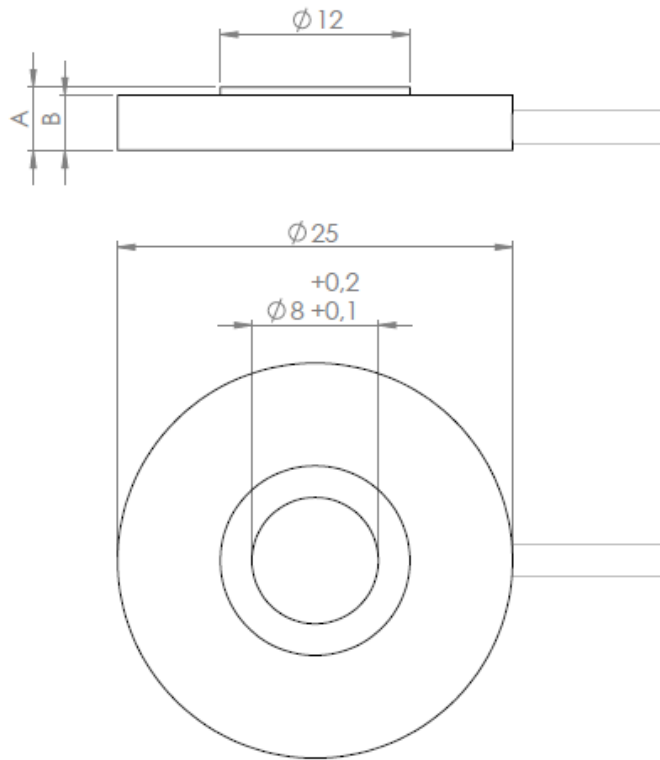
Measuring range (in N)	Material	Overload without alteration
10 – 20 – 50 – 100	AU4G	2 x FS
200 – 500 – 1000 – 2000 – 2500 – 3000 – 4000 – 5000	APX4	2 x FS

### TECHNICAL CHARACTERISTICS

PARAMETERS	VALUES	NOTES
Power supply	10 Vdc	
Operational temperature	-40°C to 120°C	
Compensated temperature	0°C to 60°C	
Linearity	$\leq \pm 1\%$ FS	
Hysteresis	$\leq \pm 1\%$ FS	
Drift at zero	<2% FS /60°C	In compensated range
Sensibility drift	<2% read value /60°C	In compensated range
Entry impedance	1K $\Omega$ to 3K $\Omega$	
Exit impedance	500 $\Omega$ to 1K $\Omega$	
Insulation	> 100M $\Omega$ under 50 Vdc	
Signal at FS	100 mV	
Output cable	2m standard	Other customized length
Calibration	Compression	
Version	Load washer or Hemispheric load	
Conditioner or display	on cable line amplifier	

DIMENSIONS

**FC--N8-25**



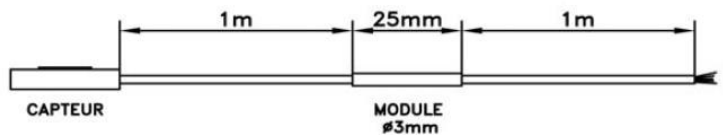
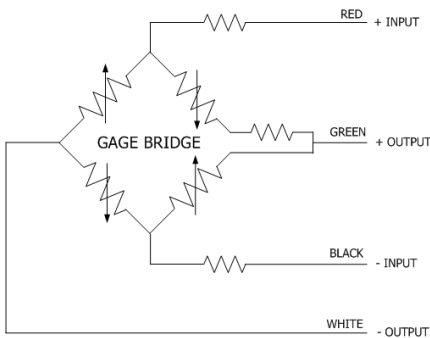
Measuring range	A (mm)	B (mm)
10N à 1 000N	4	3.5
2 000N à 5 000N	5.5	5

**FC--N-25** models have similar dimensions, but without the 8 mm central hole.

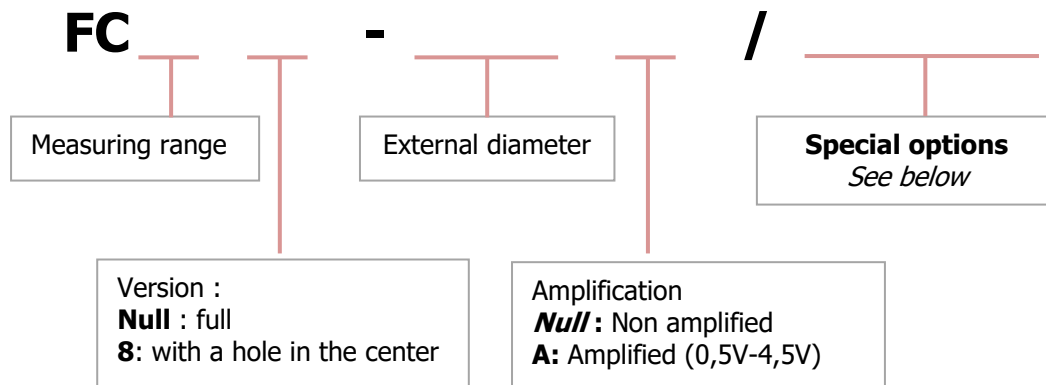
CABLING

**FC--N--25**

Amplified version



## ORDER INFORMATION



### • Special options

OPTION	INDICATION
Cable length	Length in meters (M) 2m standard

Example: **FC100N8-25A / 5M**

- Measuring range: 100 N
- Version: Load washer (hole 8mm)
- External diameter:  $\varnothing$  25
- Amplified
- Cable length: 5 meters

## CONTACT

**MESUREX**  
13 Rue des Corroyés  
78730 Saint Arnoult en Yvelines (France)

Tel : +33 (0) 1 30 41 23 62  
Mail : [mesurex@mesurex.fr](mailto:mesurex@mesurex.fr)  
Web : [www.mesurex.fr](http://www.mesurex.fr)