

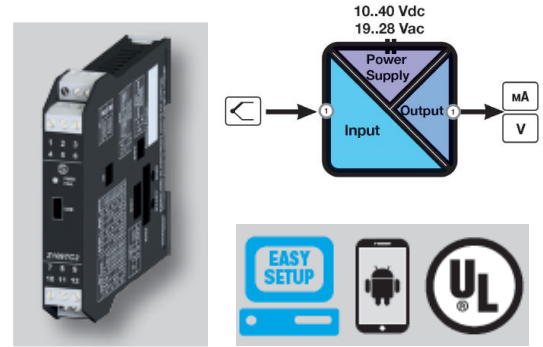
# Signal converter with micro-USB interface

Ref : FP 4201

Rev :

This is a temperature converter for thermocouple J, K, E, S, R, N, T type. It provides a mA/V standard output signal. A 3-way galvanic isolation among power supply // input // output circuits assures the integrity of your signals.

This kind of converter offers high accuracy class (0,1%), fast response time (up to 35 ms), wide operating temperature range and low power consumption. Besides DIP-switch settings, the module has a Micro USB connector on the front side and can be configured by PC software (EASY<sup>®</sup> SETUP) or dedicated app for Android devices setting: start/end scale, additional input types, square root extraction, filter, burnout, etc. This converter is certified in accordance with UL standard.



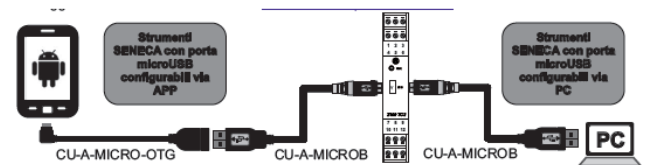
## Technical data

General data	
Power supply	10...40Vdc/19...28Vac
Max consumption	2,5W
Isolation	1.500Vac (@3 ways)
LED status indicators	Power supply, error, out of scale
Protection degree	IP20
Pollution degree	2
Response time	35...140 ms
Interface	Micro USB (front panel)
Accuracy class	0,1% (TC) – 0,3 (voltage output)
Thermal drift	0,01%/°K
Setting	Commutateur DIP Logiciel (facile à régler) Application Android (facile à régler)
DATA memory	EEPROM, 40 years retention time
Operating temperature	-10 ... +60°C
Dimension	17,5 x 100 x 112mm
Connection	Screw removable terminals pitch 5.08mm, section 2.5mm <sup>2</sup>
Case	Nylon 6 30% fiber glass
Mounting	35mm DIN rail (IEC/EN 60715)
Weight	200g
Approvals	CE, UL UR CSA
Norms	EN 61000-6-4, EN 61000-6-2, EN 61010-1
INPUT DATA	
Channels	1
Type	Thermocouple Type : J, K, R, S, T, E, B, N Resolution 5µV Automatic detection of cable interruption Sampling frequency from 240 sps (@11 bit+sign) to 15 sps (@15bit+sign) Response time from 35 ms (@11bit+sign) à 140 ms (@15bit+sign)
OUTPUT DATA	
Channels	1
Type	VOLTAGE (V) 4 scales : 0...5, 1...5, 0...10, 2...10V Min load impedance KΩ Resolution : 0.025%...0,032% CURRENT(mA) Connexion active/passive 2 scales : 0...20, 4...20 mA Max load impedance : 600Ω Resolution : 0,025...0,032%

## Application example



## Setting by USB interface



## CONTACT

**MESUREX**

13 Rue des Corroyés  
78730 Saint Arnoult en Yvelines (France)

Tel: +33 (0) 1 30 41 23 62  
Fax : +33 (0) 1 30 41 23 80  
Mail : mesurex@mesurex.fr